



WHERE MOMENTS MATTER™



We are part of the number one major appliance manufacturer in the world.

Whirlpool Europe, Middle East & Africa (EMEA) - with approximately 24,000 employees, a sales presence in more than 30 countries in Europe, Middle East and Africa and manufacturing sites in nine countries, Whirlpool EMEA is a wholly-owned subsidiary of Whirlpool Corporation.

Whirlpool Corporation is the number one major appliance manufacturer in the world, with approximately \$20 billion in annual sales, 100,000 employees and 70 manufacturing and technology research centers throughout the world in 2014.

The company markets Whirlpool, KitchenAid, Hotpoint, Maytag, Consul, Brastemp, Amana, Bauknecht, Jenn-Air, Indesit and other major brand names in more than 170 countries. Whirlpool Corp.'s European Operations Center is located in Comerio (VA), Italy.

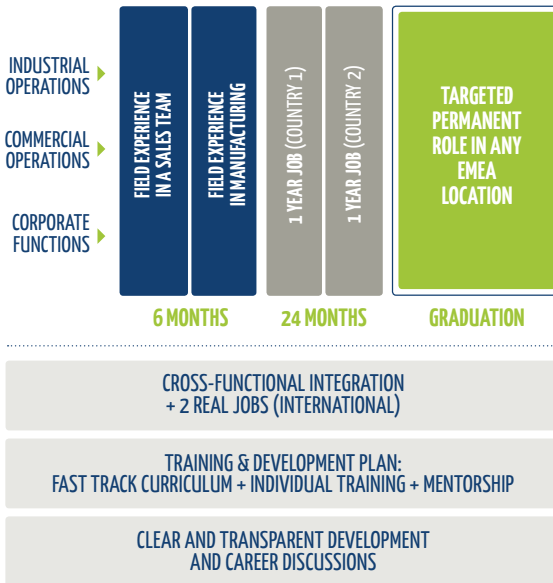


* Whirlpool ownership of the Hotpoint logo in EMEA and Asia Pacific regions is not affiliated with the Hotpoint brand sold in the Americas.

Your Career @ Whirlpool

Whirlpool offers talented students and graduates the opportunity to kick-start their career in their field of interest. Not only will you work on real projects with real responsibilities right from day one, you also get the possibility to develop yourself to the fullest on a personal and professional level. We put a strong focus on career development: Whirlpool is an organization capable of offering both international and local opportunities, with a flexible structure for career advancement and great opportunities to experience different roles in the organization. Our aim is to accelerate your development: those who excel can expect endless opportunities.

WHIRLPOOL FAST TRACK JOURNEY - 30 MONTHS



International Graduate Program

Whirlpool's Fast Track Management Program (FTMP) is an international graduate program for top graduates aimed at developing future leaders of the company. We offer a 30-month accelerated Leadership Program where you will experience cross-functional and cross-country rotations within Whirlpool's European locations. Depending on your background and interests, you can select one of the following tracks: commercial, industrial or corporate functions. In each job rotation, you can expect unmatched experience, exposure to senior leaders, a personal training and development plan and formal mentoring.

Who are we looking for?

We are always looking for talent: international and diverse people with clear leadership potential. People who are flexible, curious and innovative: who are not afraid to challenge ideas and who are able to drive change. People who are ready to roll up their sleeves in order to get the best results together. Together, because we are looking for team players: people who like to work in teams and to interact with different functions and cultures.

Join us!

Get hands-on experience through a challenging internship assignment or start your career within one of our offices or factories and get endless opportunities to move to different functions and other locations.

emea.whirlpoolcareers.com

www.linkedin.com/company/whirlpool-emea